



# Getting Started Manual Installation and User Guide Version 2



**An affordable digital eye chart solution.**  
[www.DigitalEyeChart.com](http://www.DigitalEyeChart.com)  
**(208) 520 4292**  
[sales@DigitalEyeChart.com](mailto:sales@DigitalEyeChart.com)

© Copyright 2006-2007 DigitalEyeChart.com  
All rights reserved



**An affordable digital eye chart solution.**  
**[www.DigitalEyeChart.com](http://www.DigitalEyeChart.com)**  
**(208) 520 4292**  
**[sales@DigitalEyeChart.com](mailto:sales@DigitalEyeChart.com)**

# Contents

<b>Getting Started - ---</b>	<b>4</b>
Step One: What you need to get started.	4
Step Two: Enabling the Wall Monitor.	5
Step Two: Enabling the Wall Monitor (continued).	6
Enabling a Second Monitor on Vista.	7
Step Three: Installing the Digital Eye Chart Software for Windows XP and earlier.	7
Step Four: Calibrating the Chart.	11
Installing the Digital Eye Chart on Microsoft's Vista	13
Installing on Vista Continued	14
<b>User's Guide.- ---</b>	<b>15</b>
Features at the press of one button	16
The drop-down menus give additional options.	18
Contrast Sensitivity Chart.	19
Single Letter Variable Acuity Chart.	21
<b>Advanced Setup.- ---</b>	<b>23</b>
<b>Trouble Shooting.- ---</b>	<b>25</b>
No icon on the desktop	25
Start up screens do not appear	25

# Getting Started

Thank you for purchasing the Digital Eye Chart. This booklet will guide you through the install and setup of the software and show you how to configure your laptop or dual monitor capable desktop computer for use with the software.

## **Step One: What you need to get started.**

Before you install the Digital Eye Chart, check the following list to see if you have all of the items necessary.

1. A laptop or tablet PC capable of extending the windows desktop to an external monitor or a PC capable of running two monitors. For instructions on checking your computer see Step Two on the next page.
2. The computer must have Internet Explorer 6 installed. This limits you to running on a Microsoft operating system like XP. Please contact us if you would like to run the software on another platform. Other browsers are being evaluated for quality and compatibility.
3. A flat screen liquid crystal display (LCD) to hang on the wall where your front mirror for a projector system would hang. If your patient viewing distance is under 9 feet we recommend mounting the display on the back wall and viewing through a mirror. A 17 inch monitor with 1280x1024 resolution is recommended.
4. A mounting bracket for mounting the monitor to the wall.
5. A long VGA cable to connect your computer to the monitor.
6. The install CD for the Digital Eye Chart.
7. A login account with administrative privileges--allowing you to install programs.

Optional:

Cable trays to hide the cable.

Visit <http://www.digitaleyechart.com/system.htm> for more on required/recommended equipment.

## Step Two: Enabling the Wall Monitor.

The Digital Eye Chart uses two monitors: one for the control screen that the optometrist sees and one to display the acuity chart to the patient. First you need to enable the external monitor.

If you are running Windows Vista operating system please see page 23 for detail on how to set up the wall monitor.

1. Right click on an open area of Windows desk top. A menu will appear (Figure 1). Left click on Properties from the menu.
2. A dialog box will appear. Click on the **Settings** tab at the top of the box as in (Figure 2).

Note: if two rectangles are present the computer's graphics card supports the external (second) monitor that the Digital Eye Chart requires.

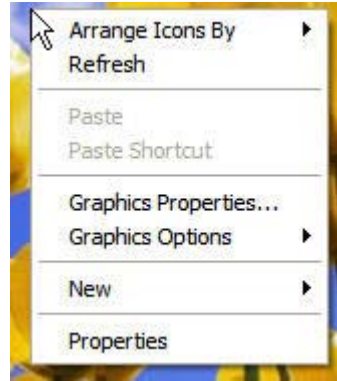


Figure 1.

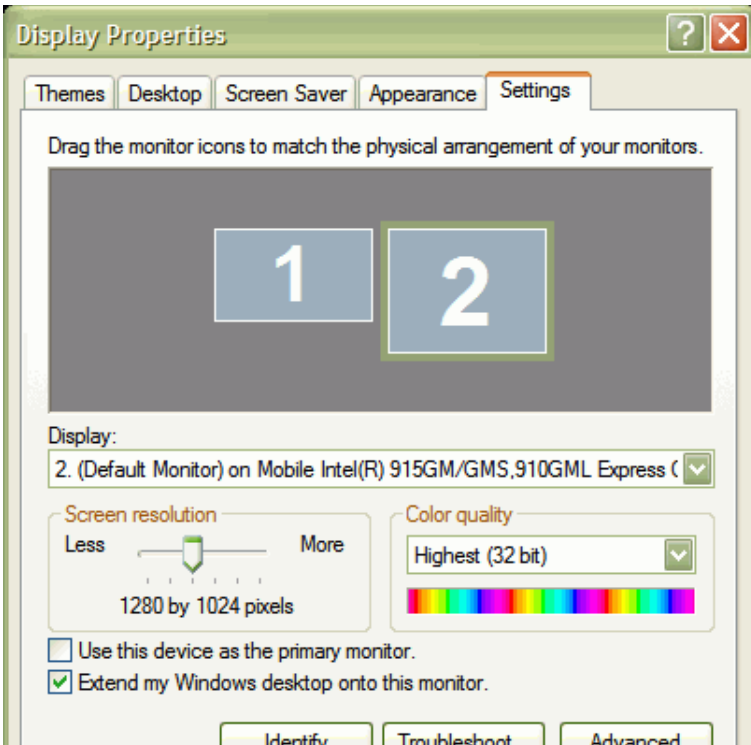


Figure 2.

## Step Two: Enabling the Wall Monitor (continued).

3. Click on the rectangle with a “2” in the center to select the second monitor
4. Towards the bottom of the dialog there are two check boxes. Check the box that says, “Extend my Windows desktop onto this monitor.” (Figure 3.)

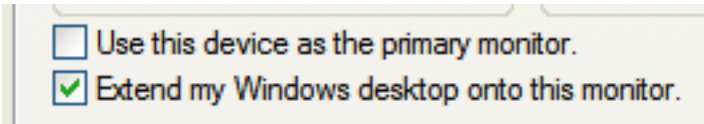


Figure 3.

5. Adjust the resolution of the display by moving the arrow below the resolution section. The resolution needs to match the resolution of the monitor on the wall. This information can be found in the user’s manual for the monitor. If you are using the recommended monitor, the resolution will be 1280x1024.
  6. Click “Apply”
  7. Now plug the wall monitor into the laptop using the long VGA cable. You may want to do this on your desk prior to hanging the monitor on the wall to verify the setup. See Figure 4.
- Note: you will now be able to use both screens. Try moving the cursor past the right edge of the main screen. You will see the cursor on the wall monitor if steps were followed correctly.

The method of mounting your monitor to the wall and running the cables is dependent on your examination room setup. A typical setup will use an inexpensive wall bracket mounted with dry wall or other types of anchors. Cables may be routed outside or inside walls depending on your needs. Cable raceways such as those at [Blackbox.com](http://Blackbox.com) can be used to disguise exposed cabling.

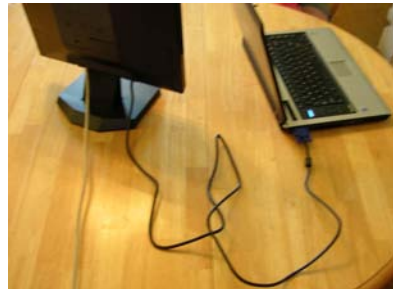


Figure 4.

# Enabling a Second Monitor on a computer running Vista.

Enabling the second monitor on Vista looks a bit different than on a machine using XP. To do this:

1. Right click on a blank area on the desktop
2. Select Personalize (Figure A)
3. Select Display Settings
4. Extend the desktop to the monitor labeled 2. (Figure B)
5. There will be only one setting for resolution for the second monitor until you connect the second monitor. Vista auto detects and configures the setting for the monitor's resolution.

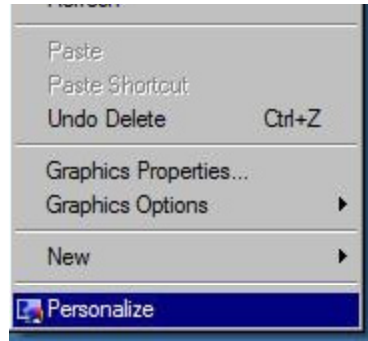


Figure A.

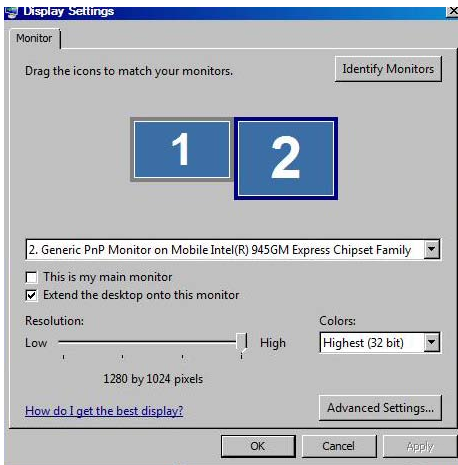


Figure B.

## Step Three: Installing the Digital Eye Chart Software for Windows XP and earlier.

The following gives step by step instructions for installing and doing the initial setup of the Digital Eye Chart. You will need the Digital Eye Chart installation CD. Go to page 22 if you are using Vista.

## Step Three Continued

1. Insert the Digital Eye Chart Installation CD into the CD drive of your computer.
2. Go to “My Computer” on the “Start” menu and double click the CD drive (likely drive letter D:). This will open a list of all of the files on the CD. Double click the file “install.bat”, This will install the program.

3. A short cut will appear on your desktop. (Figure 5). Double click on the short cut and Internet Explorer (IE) will open.



Figure 5.

4. If an IE window with the license agreement opens skip to step number 6. If only a window to a link “Click here if control window did not start”, it is likely pop-up blockers are enabled on your machine. Digital Eye Chart uses pop-ups to automatically open the chart window. You may choose to enable pop-ups or configure your pop-up blocker(s) to allow Digital Eye Chart to use pop-ups. Or, press the link “Click here if control window did not start.” Note: with pop-ups enabled you will have to do this and one other step discussed later each time you run the program.

Many internet service providers, browsers, and internet tool bars provide pop-up blocks. Refer to documentation for the ones you have installed to determine how to configure.

5. If after configuring pop-up blocks and/or clicking the “Click here if control window did not start,” check the Advanced settings of internet explorer. Select Tools from Internet Explorer menu. Click on Options and select the advanced tab. Scroll to the Security settings. The check box for “Allow active content to run in files on My Computer” needs to be checked to allow the program to run. (See Figure 6). Leave your other settings the same.



## Step Three: Installing (continued)

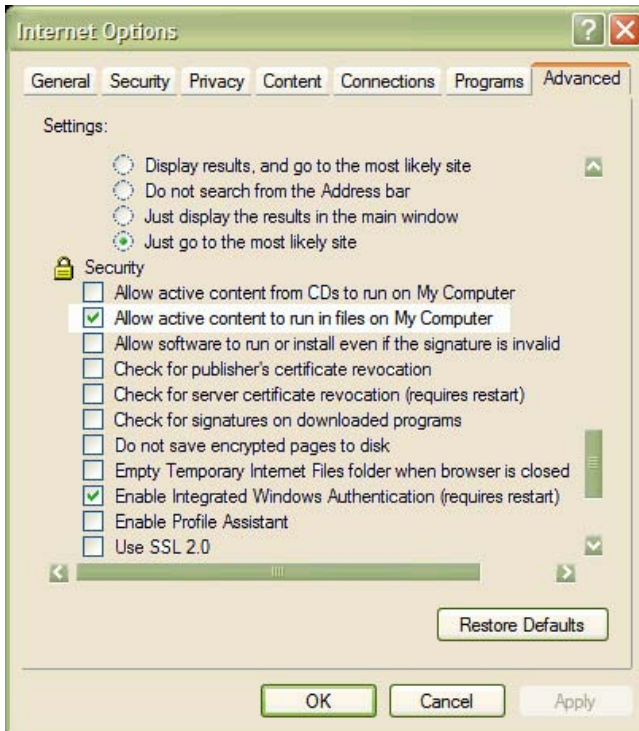


Figure 6. Check the security setting for active content on file on My Computer. See highlighted selection.

6. The first time the software is run the license agreement will be displayed. Read the license agreement and AGREE or DECLINE. In the case you accept the agreement the initial window for the Digital Eye Chart with the Digital Eye Chart logo will appear. If pop-ups have been allowed the window for the patients view will appear with scenery pictures. If pop-ups have not been enabled click the menu item, “Troubleshoot,” and select “Open Wall Chart.” You will now have the control and chart windows displayed on the monitor. Note: with pop-ups blocked you will need to “Troubleshoot->Open Wall Chart” each time you run the program. If this step did not work consult <http://www.digitaleyechart.com/faq.htm> or call.

### Step Three: Installing (continued)

7. Once both screens appear, click on the patient's chart screen and drag it across to the patient monitor. You must use a mouse or other positioning device to perform this action. The stylus from the Tablet PC will not work. Click and hold on the menu bar across the top of the eye chart. Now drag the eye chart across to the other monitor. (Figures 7 and 8).

Note: monitors are shown side by side for illustrative convenience. The monitor on the right will be the one mounted on the examination room wall.



Figure 7. Moving the chart to the wall monitor

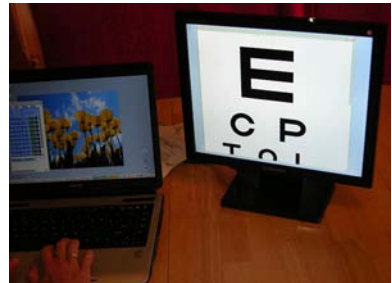


Figure 8. The chart is on the patients view monitor

8. Click on the maximize button (Figure 9) (This is found in the top right corner of the screen) to make the chart window full size. The chart window will expand to full screen on monitor. (Figure 10). You are now ready to set up your charts.



Figure 9. Maximize button.



Figure 10. Chart expanded to full screen.

## Step Four: Calibrating the Chart.

The following gives step by step instructions setting the size of the letters of the chart for accurate acuity measurement.

1. Move the cursor over the “Go To Charts” menu and select “Calibration/Setup”. See Figure 11. The Configuration control window (Figure 12) will appear on the doctors screen and a screen with three E’s will appear on the patients view monitor.

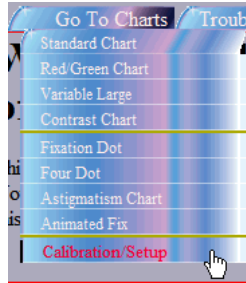


Figure 11. Go to Charts-Calibration set up.

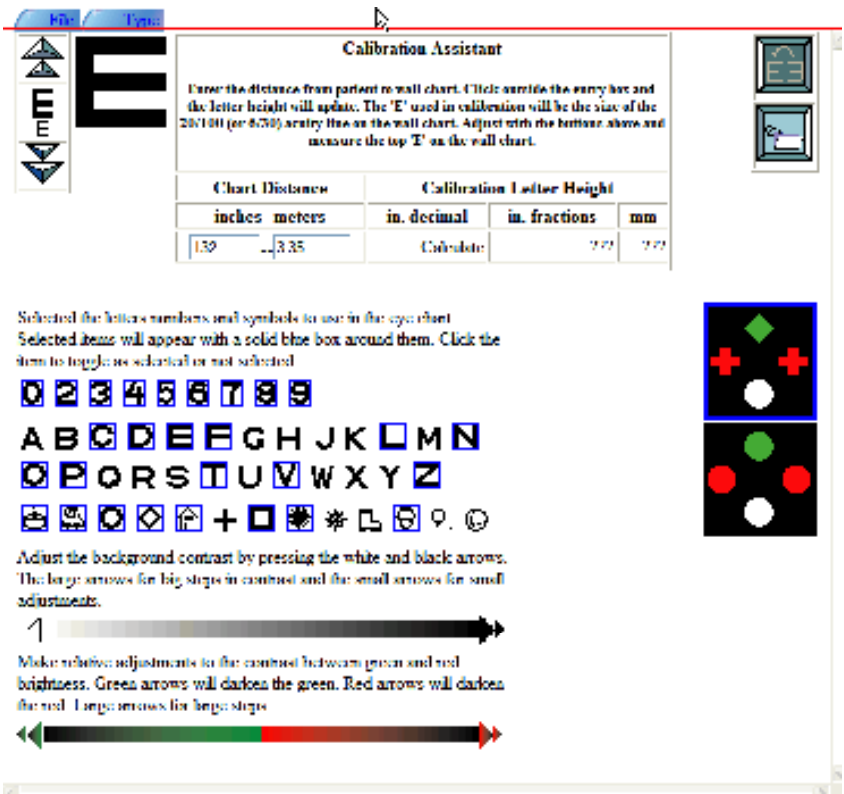


Figure 12. Calibration Screen

## Step Four: Calibrating the Chart. (Continued)

- Next, measure the distance from the patient to the wall monitor in inches.
- Enter that number in the Calibration Assistant Chart distance entry box and click Calculate. (Figure 13). The result is given in three forms (inches decimal, inches fractional, and millimeters).

Calibration Assistant			
Enter the distance from patient to wall chart. Click outside the entry box and the letter height will update. The 'E' used in calibration will be the size of the 20/100 (or 6/30) acuity line on the wall chart. Adjust with the buttons above and measure the top 'E' on the wall chart.			
Chart Distance		Calibration Letter Height	
inches--meters		in. decimal	in. fractions
<input type="text" value="132"/>	-- <input type="text" value="3.35"/>	Calculate	???

Figure 13. Calibration Assistant

- Next, measure the top “E” on the wall chart. We will now adjust it to match the calculated size.
- If the E is larger than the calculation on the calibration screen then click on the down arrows next to the E. The small arrow will decrease the size of the E by single steps and the large arrow will increase the size in larger increments. If the E is too small, then click on the up arrows. (Figure 14). Note: This is the size the 20/100 letters will appear on the chart. The optometrist should verify the size meets their standard.

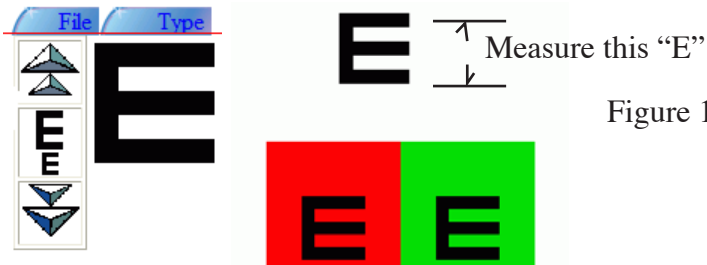


Figure 14.

## Step Four: Calibrating the Chart. (Continued)

6. After the size is adjusted, click Save Settings Button to save calibration settings (Figure 15).



Figure 15.

You will only have to perform the calibration once unless you change the distance between the patient and the monitor.

Note: If the distance between the patient and the wall in the office is less than 9 feet, we recommend that you use a mirror and place the screen at the back of the room in order to get best results. This is due to the finite resolution of the LCD monitor. If this is the case then click on the mirror button to have the chart mirrored. (Figure 16) for correct reflected viewing. You must click the save button to keep changes.



Figure 16.

You have now successfully set up the Digital Eye Chart. There are other configurations possible, such as, selecting the letters, number, and pictures you prefer to use. Other options include adjusting the contrast level and the red/green balance. See descriptions of these configurations in the Advanced Setup Tools section.

## Installing the Digital Eye Chart on a Computer Running Vista

Installing Digital Eye Chart on Vista varies slightly from the process on XP.

Put install CD in the CD drive

1. Click Start:
2. Then Click “All Programs”

# Installing on Vista Continued

1. Then Click Accessories
2. Then “right click” Command Prompt Program (Figure C)

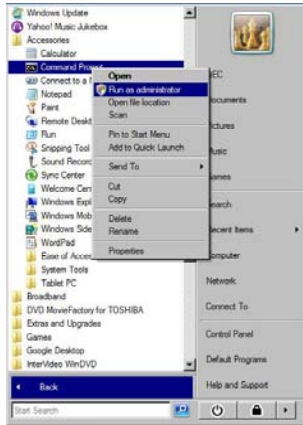


Figure C

1. Select run as administrator. It will ask you if you really want to do this.
2. Select Continue.
3. Select continue to run command prompt
4. In command prompt window type the following pressing the “enter” key after each line:
5. D: (or the drive letter of your CD drive)
6. Install.bat (Figure D)
7. You should see a screen appear that scrolls through everything being installed.
8. Your software has now been installed.
9. Check your desktop for the icon. If it is not there, right click on the desktop and select Refresh. Your icon, is now on the desktop.

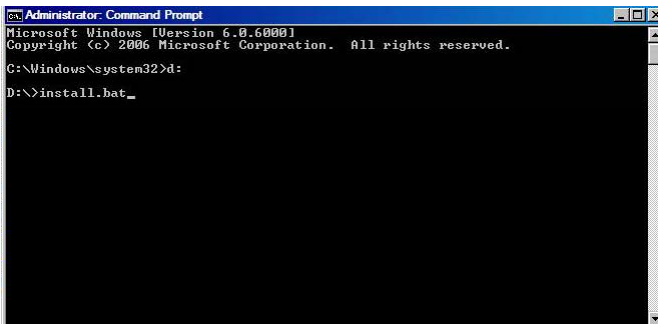


Figure B

# User's Guide.

The Digital Eye Chart is a web browser based acuity chart program for optometric refraction and acuity determination. The program control window is displayed on the doctors screen (laptop screen or primary monitor). The chart is displayed on a secondary wall mounted monitor. Digital Eye Chart can be run simultaneously with an electronic patient records program or other software, making dual use of the computer. This is a cost effective alternative to a projector and is an excellent addition to any office that is going paperless. There are two parts to the eye chart, the control screen that the optometrist uses on the laptop or Tablet PC to control what the patient sees and the eye chart that the patient sees.

Below is a summary of the control functions available on the standard and red/green charts. Single letter is not available on red/green.

The screenshot shows a control interface for the Digital Eye Chart. At the top, there are four tabs: **Symbol**, **Type**, **Control**, and **Acuity**. Below the tabs is a grid of letters and acuity values. At the bottom, there are buttons for **RANDOMIZE** and **BLANK**.

**Chart Type:** Select Red/Green, Fixation, Fourdot, etc.

**Control:** Show all, Blank all, and darken background

**Choose Symbol Type:** Letters, Numbers, Symbols, Rolling E's, Rolling C's

**Select Acuity:** Use menu to select an acuity or a set of 3 acuity rows to display

**Toggle Row:** Turn a row off and on.

**Single Letter:** Click on any letter to show only one letter.

**One Row Only:** Display this row only

**Randomize:** Randomize the chart with one click.

**One Click Blank:** Darken the chart to reduce illumination in the exam room. Return to chart by clicking again.

Symbol	Type	Control	Acuity
E			20/400.0
C L			20/200.0
O D P			20/150.0
V F L N			20/100.0
T E D F O			20/80.0
P N T Z F			20/60.0
V C E T L			20/50.0
O M P V T			20/40.0
D F N L			20/30.0
V O F C			20/25.0
P E V N T			20/20.0
F D C Z N			20/15.0
V T D L C			20/10.0

Figure 17.

The menus at the top allow for selection of the type of symbols (letters, numbers, pictures, tumbling E's and rolling C's); the basic chart type (standard, red/green, fixation dot, four dot, and astigmatism); special controls; and acuity selection.

Clicking on the chart gives the doctor easy one mouse click control of the chart to display single rows, toggle rows, or single letters, as well as allowing the chart to be randomized at the press of a button. Take a few minutes to try out the options.

**Features at the press of one button**

All charts have "BLANK": press one button at the bottom of the control window and the screen darkens to reduce the light in the examination room. Click it again to restore the previous chart.



Figure 18. Darken the screen

**Standard and Red/Green Charts:**

Select One Row - Click the arrow on the right of a row and display only this row.

Toggle Rows - Press the acuity number to the right of the arrow and toggle any row off and on leaving the other rows displayed as before.

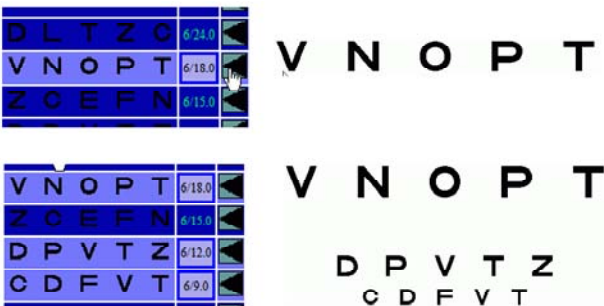


Figure 19. Select a single row then toggle on another.



**Randomize** - Press the button at the bottom of the control window and the control and chart are filled with a new symbols of the type currently displayed. No row will have the same character twice. This rates as our doctors' favorite feature.

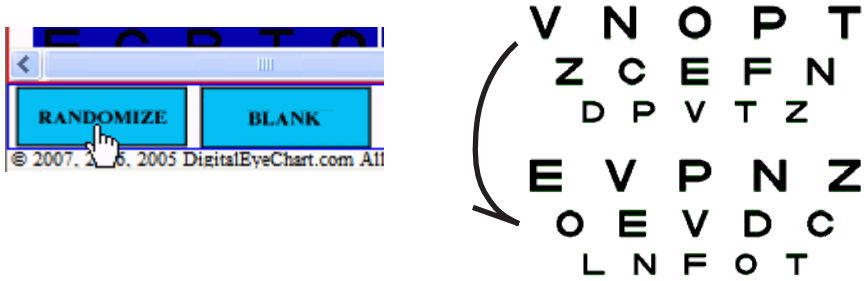


Figure 20. Randomize on the right before and after.

The Standard Chart has one additional one click feature: Click any letter and the chart will isolate on that letter.



Figure 21. Click an letter and the chart isolates on that letter

## The drop-down menus give additional options.

Symbols on the Standard and Red/Green charts allow for a choice of 5 sets of symbols: Letters, Numbers, Pictures, Tumbling E's and Rolling C's.

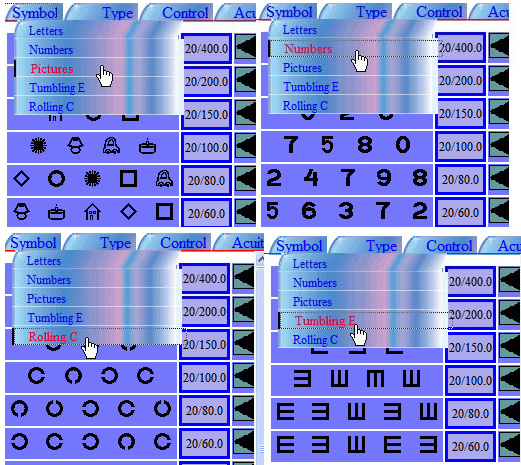


Figure 22. Symbol Types.

Acuity: allows the choice of a specific acuity, sets of 3 rows of acuity and a vertical (single column) chart on the standard chart.

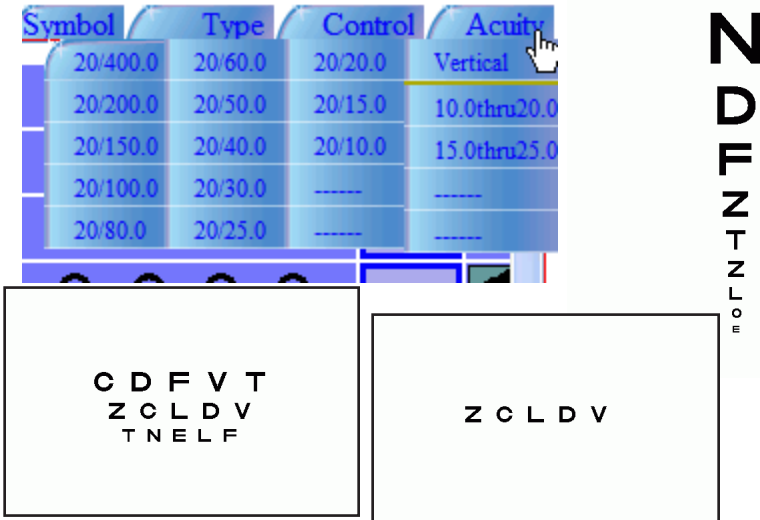


Figure 23. Acuity menu and results available from it. Clockwise: Vertical chart, single acuity, commonly used groupings of three.

## Contrast Sensitivity Chart.

This chart presents patient with single or multiple rows of varying contrast from the white background. Figure 24 shows the screen capture of the patients view. Up to five rows of varying contrast to the white background are shown. The range of contrasts are controlled from the doctors control screen by selecting a minimum percentage contrast and the average contrast. The middle row will be displayed at the selected average. The maximum contrast is calculated to be the average plus the difference between minimum and average percent contrast. The doctor has several ways to adjust contrast ranges including: typing numbers into fields, increase/decrease buttons, and drop-down menus. The doctor also may input a specific acuity level to determine optotype size. All optotypes available on standard chart are available on this chart also. One click randomize and blank features are the same as other charts.

See control screen in Figure 25 on next page.

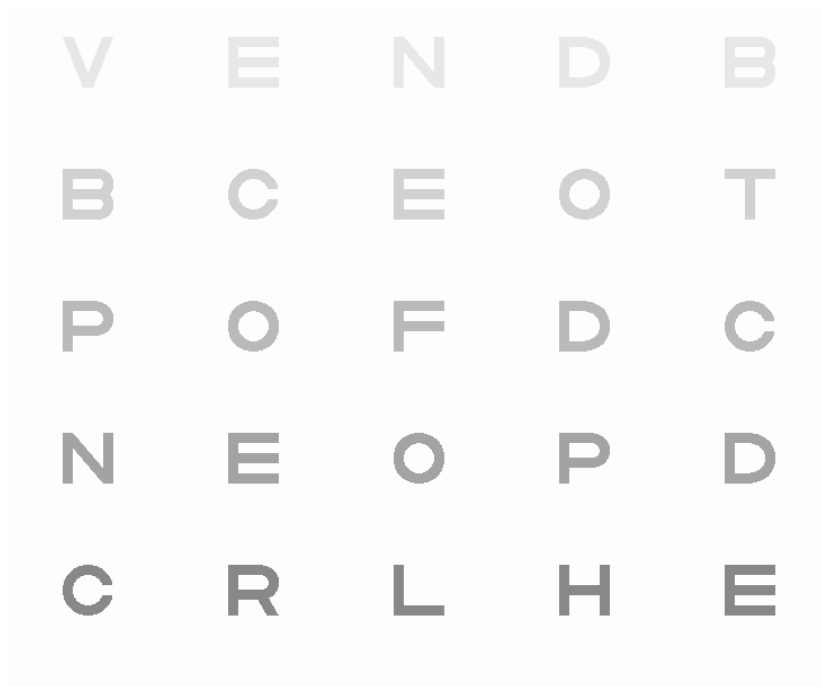


Figure 24. Up to five rows of varying contrast rows are shown on the patient's screen.

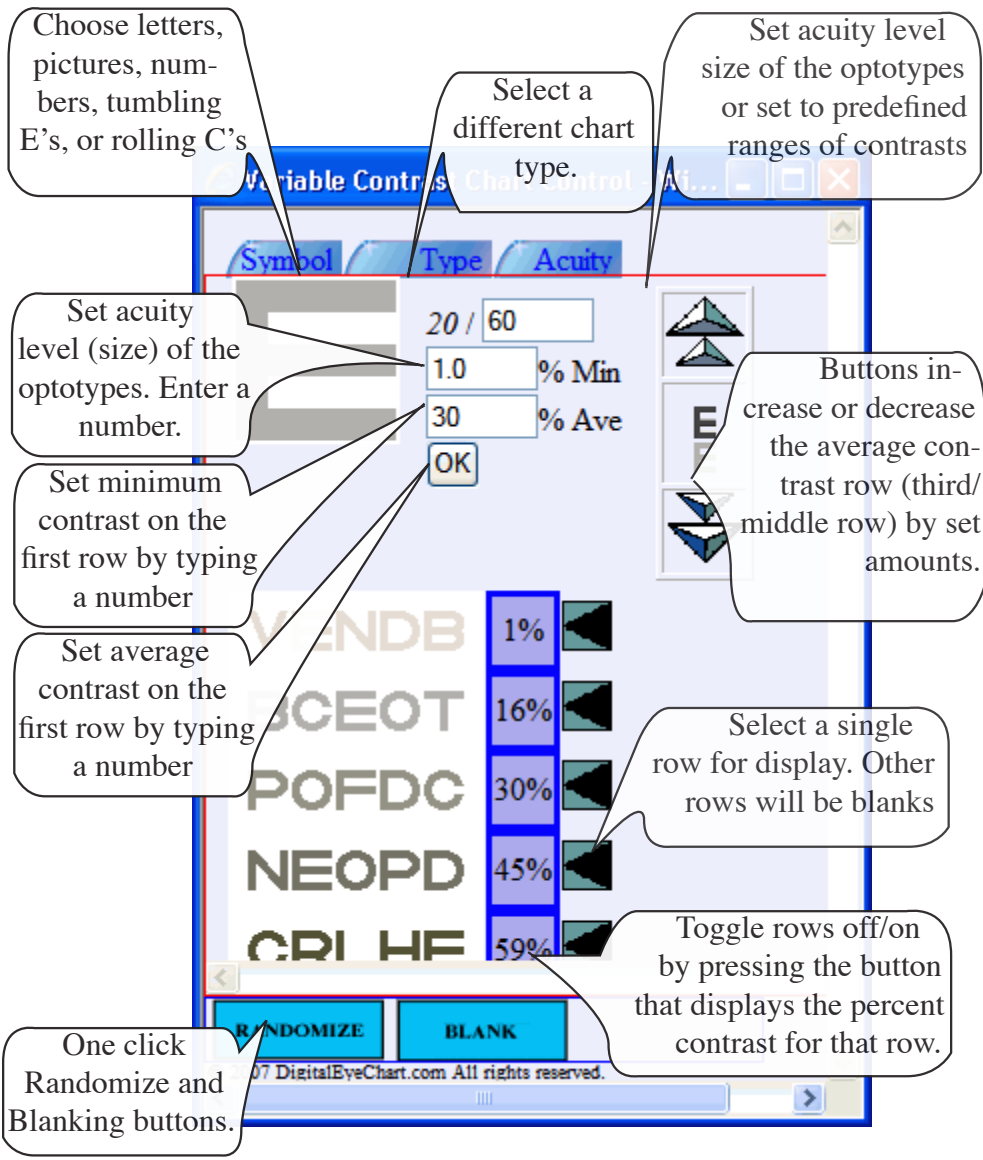


Figure 25. The doctor's control screen allows for configuration of the contrast chart. The range of the five rows is set by menu option, entry boxes or the arrow buttons. Acuity level (size) can be set with the text box or menu. Rows are selected and toggled via buttons like standard chart. Optotype is chosen from menu. Blank and randomize area available at the bottom of the screen.

## Single Letter Variable Acuity Chart.

This chart allows you to present any of the optotypes in a one letter chart. The acuity level of the chart is variable to any whole number. This is an effective way to assess patients at greater than 20/400 when only one letter will fit on the screen at a time. The maximum letter size depends on the examination room configuration and the size of LCD monitor. This chart has the one click randomize and blank, as well as arrows to click to double and halve the size. Selection of the optotypes is the same as the standard chart.

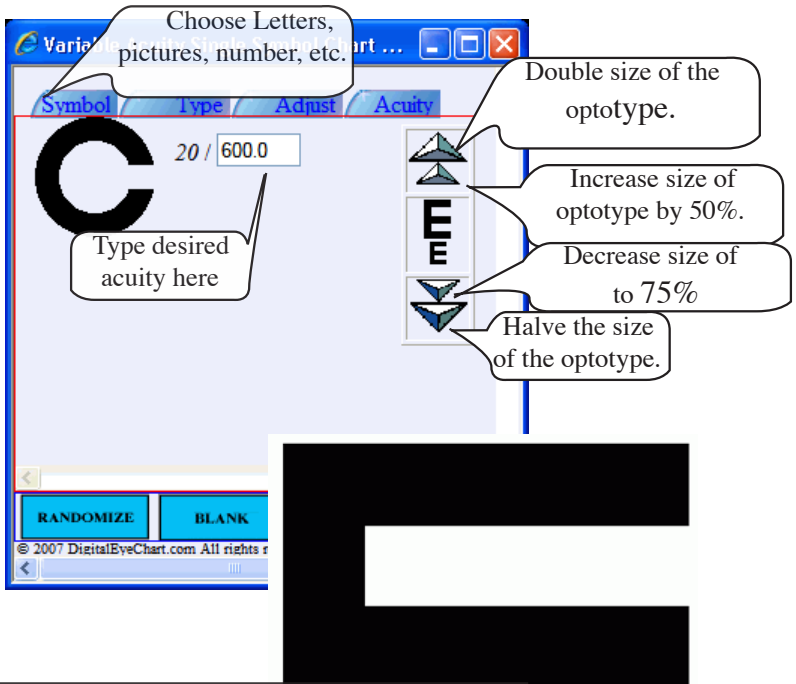


Figure 26. The doctor's control screen allows for several ways to adjust the size of the optotype on the patients's view. The triangular buttons allow for adjustment by factor of two or factor of 1.5 (small buttons). A whole number acuity can be typed into the entry box. Of specific acuity level can be picked from a drop down menu. Choose type of symbol from menu

Figure 27. This single large optotype is centered on the patient's screen.

Type on all charts allows a different chart to be selected: Standard, Red/Green, Fixation Dot, Four Dot, Astigmatism, Large variable chart, contrast sensitivity, children's animated fixation dot and a slide show of educational, promotional or entertaining material. Also click here to get back to setup screen.

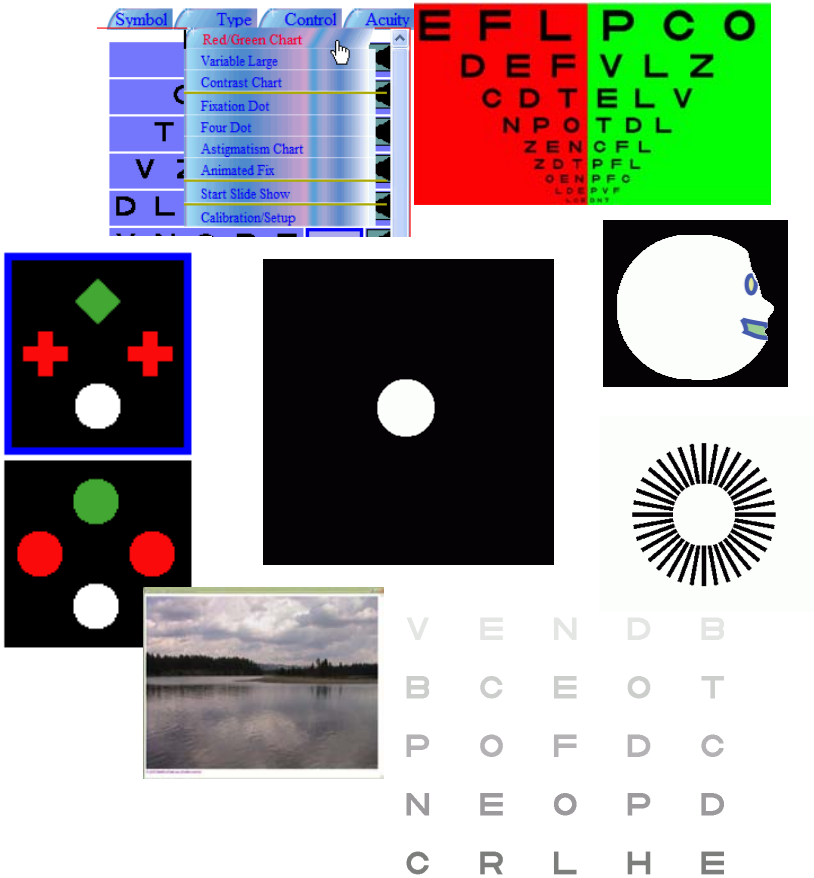


Figure 28. Select the various chart types, slide show, or setup screen from the Type menu.

The default slide show is a series of photographs from the Teton/ Yellowstone National Parks area. These slides can be customized with educational, promotional or entertainment slide. Contact us for custom slide generation service or details on creating and linking in your own.

Control: allows the chart to be masked making the background dark except for the selected letter(s). It also allows all rows to be enabled or cleared.

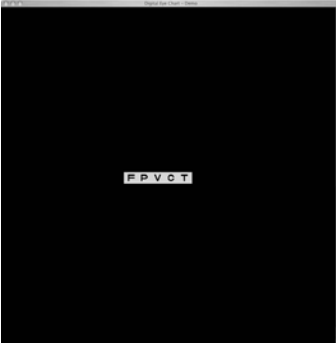


Figure 29. Mask the isolated rows or symbol. Provides a dark background around the letters.

## Advanced Setup.

The Digital Eye Chart provides several additional configuration options. Symbols to be used can be selected. The contrast can be controlled and the red/green balance can be adjusted.

Highlight the symbols you want to use in the chart. Clicking them will toggle between selected (surrounded by a blue box) and deselected (no blue box).

Selected the letters numbers and symbols to use in the eye chart. Selected items will appear with a solid blue box around them. Click the item to toggle as selected or not selected.



Figure 30. Select symbols to use in the Calibration/Setup screen.

Optometrists have found patients testing out to better acuities due to the brightness and contrast of the LCD monitor. If you desire to adjust the contrast use the background adjustment shown in Figure 31. Tune the red/green chart to your red/green glasses with the adjustment on the bottom.

Adjust the background contrast by pressing the white and black arrows. The large arrows for big steps in contrast and the small arrows for small adjustments.



Make relative adjustments to the contrast between green and red brightness. Green arrows will darken the green. Red arrows will darken the red. Large arrows for large steps.



Figure 31. Adjust the background contrast and red/green balance.

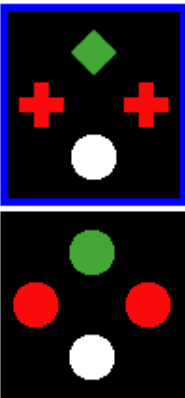


Figure 32. Optometrists can also select the type of four-dot test. Select either circles only or the diamond, plus and circle combination.

A configuration choice is also available to allow the choice between circles or a combination of shapes for the four-dot chart. Figure 32 shows a blue highlight around the chosen configuration. Simply click the other to highlight and chose the other.

Always remember to click the save button to keep new choices.



# Trouble Shooting

## No icon on the desktop

1. Go to my computer. Click on the C drive button or the drive that is your hard drive.
2. Double click on Program Files
3. Double click on DEC-Install. Look for the file DigitalEyeChart. There is no file extension.
4. If the file is there, drag it to the desktop.  
If the file is not there, please contact Heidi at heidi@digitaleyechart.com or (208)520-4292 and tell her you are missing the DigitalEyeChart shortcut file and she will send you a new disk ASAP.
5. If you are using Vista, right click the desktop and Refresh your screen. You should now see your icon.

## Start up screens do not appear

1. Check that all pop-up blockers are turned off. You might have to check in several locations and for several different programs. Internet Explore has pop up blockers, Norton does, Google does. To see if this is a problem, look down at the bottom the the browser and look or any warning messages there. You can also look at the top of the browser and sometimes there are messages that say something to the effect that a window has been blocked. If you see any of these then:
  - a. On Internet Explorer click on the tools button.
  - b. Select Pop-Up Blocker and choose turn off Pop-up blocker on this site only.
  - c. Click on the link on the one start up page that did appear.
  - d. Repeat this procedure for each of the programs that you have installed that have pop-up blockers.
2. Once all of the pop-up blockers have been turned off, if the screens still do not appear check to see if active content is allowed to run. To do this:
  - a. Go to Tools on the menu bar
  - b. Go to Internet Options
  - c. Click on the advanced tab
  - d. Select "Allow active content to run in files on My Computer"
  - e. Click OK

# Hot Key--Keyboard Control

## Switch Between Charts

- “s” standard multi-line chart
- “r” red/green chart
- “v” variable low vision chart
- “t” contrast sensitivity chart
- “d” four dot test
- “f” fixation dot
- “g” animatd fixation dot
- “a” astigmatism chart
- “w” slide show
- “b” blank/unblank (darken screen)

## Change Optotype

- “l” letters
- “n” numbers
- “p” pictures
- “e” tumbling E’s
- “c” rolling C’s
- “space bar” randomize current type

## All Multi-line chart control

- “Home” show all rows
- “End” clear all rows
- Up/Down Arrows -- move to next/previous row
- “m” mask selected items

## Contrast Sensitivity

- “PgUp/PgDown” change mean row by 5% +/-

## Low Vision Single Letter

- “PgUp/PgDown” change acuity double/half
- Up/Down Arrows -- change acuity level by 10%

# Chart Function Cheat Sheet

**Chart Type:**

Select Red/Green, Fixation, Fourdot, etc.

**Control:**

Show all, Blank all, and darken background

**Choose Symbol Type:**

- Letters
- Numbers
- Symbols
- Rolling E's
- Rolling C's

**Select Acuity**

Use menu to select an acuity or a set of 3 acuity rows to display

Symbol	Type	Control	Acuity
E			20/400.0
C L			20/200.0
O D P			20/150.0
V F L N			20/100.0
T E D F O			20/80.0
P N T Z F			20/60.0
V C E T L			20/50.0
O M P V T			20/40.0
O F N L			20/30.0
V O F C			20/25.0
P E V N T			20/20.0
F D C Z N			20/15.0
V T D L C			20/10.0

**Single Letter:**

Click on any letter to show only one letter.

**Toggle Row:**

Turn a row off and on.

**One Row Only:**

Display this row only

**Randomize:**

Randomize the chart with one click.

**One Click Blank:**

Darken the chart to reduce illumination in the exam room. Return to chart by clicking again.



An affordable digital eye chart solution.

[www.DigitalEyeChart.com](http://www.DigitalEyeChart.com)

(208) 520 4292

[sales@DigitalEyeChart.com](mailto:sales@DigitalEyeChart.com)

© Copyright 2006-2007 DigitalEyeChart.com

All rights reserved

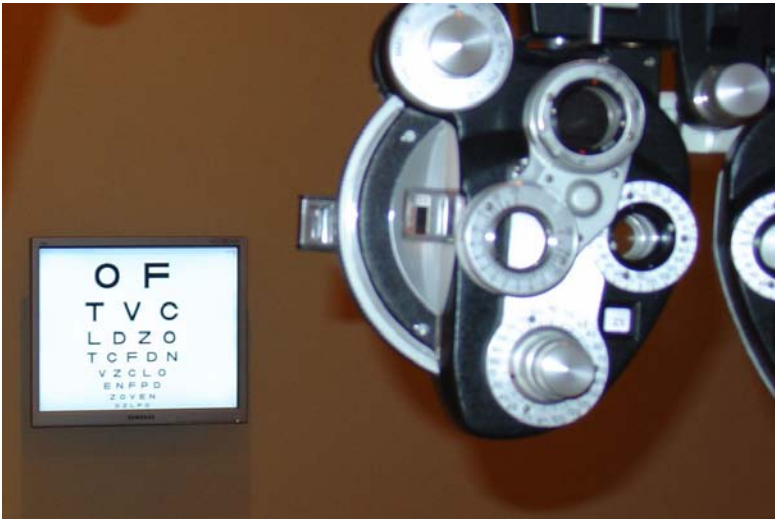
Please contact us at [info@digitaleyechart.com](mailto:info@digitaleyechart.com) with your feedback on the chart or this installation and user's guide.

Refer to our webpage for frequently asked questions.  
<http://www.digitaleyechart.com/faq.htm>

Call 208 520 4292

or contact in writing at:

Digital Eye Chart  
3103 Sandstone Drive  
Idaho Falls, Idaho 83404



**An affordable digital eye chart solution.**  
**[www.DigitalEyeChart.com](http://www.DigitalEyeChart.com)**  
**(208) 520 4292**  
**[sales@DigitalEyeChart.com](mailto:sales@DigitalEyeChart.com)**

© Copyright 2006-2007 DigitalEyeChart.com

All rights reserved